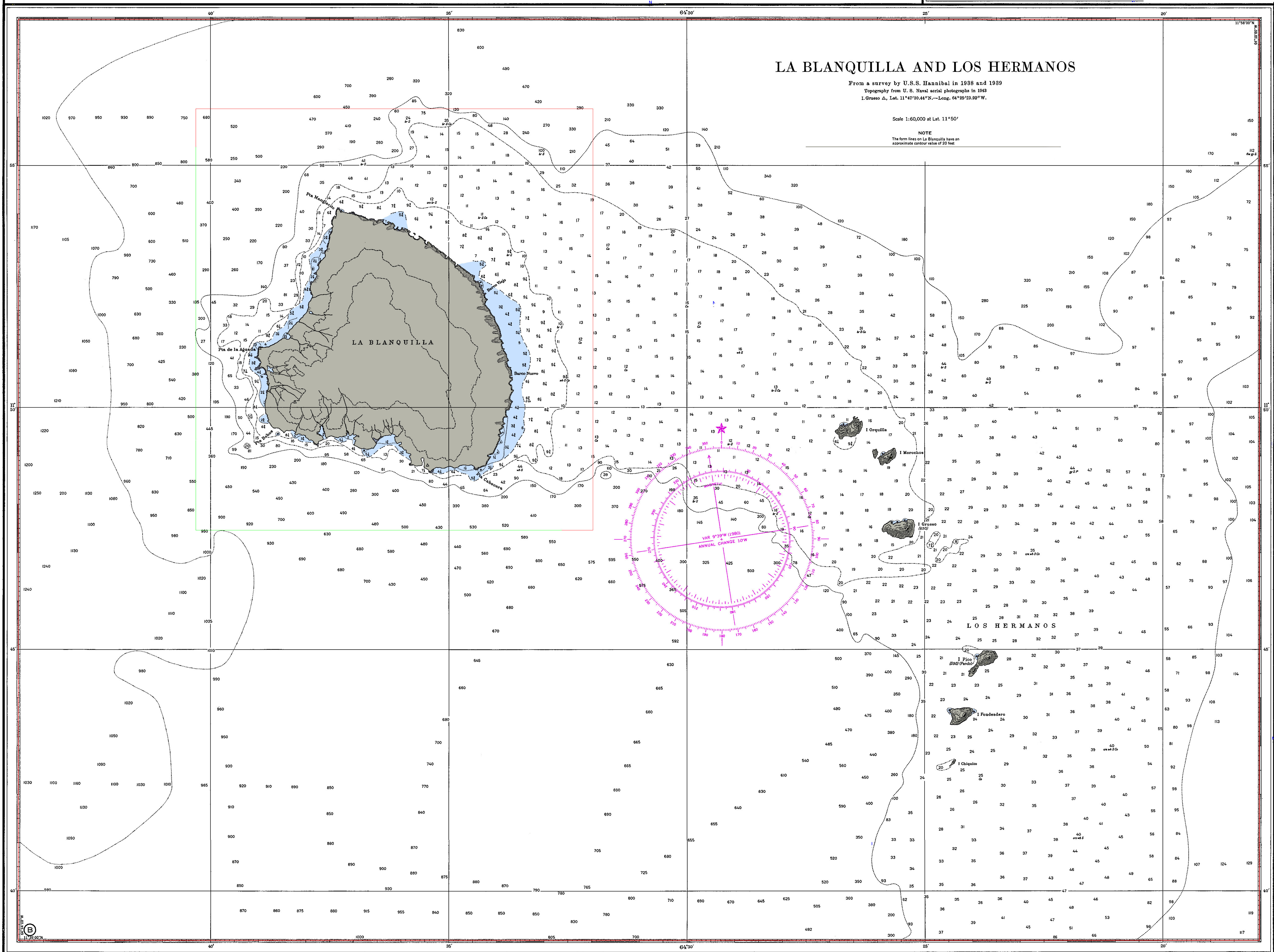


# LA BLANQUILLA AND LOS HERMANOS

From a survey by U.S.S. Hannibal in 1938 and 1939  
Topography from U. S. Naval aerial photographs in 1943  
I. Grueso Δ, Lat. 11°47'30.44"N.—Long. 64°25'23.92"W.

Scale 1:60,000 at Lat. 11°50'

NOTE  
The form lines on La Blanquilla have an  
approximate contour value of 20 feet



LOGARITHMIC SPEED SCALE  
To find SPEED, place one point of dividers on vertical mile run and the other on minutes run. Without changing divider spread, place right point on 60 and left point will indicate speed in knots. Example: with 40 minutes run in 10 minutes, the speed is 14.3 knots.

2nd Ed., July 3, 1982 (Correct through NM 27/82)

24423

DMASTOCK NO 24XC024423

SOUNDINGS IN FATHOMS

Prepared and published by the  
DEFENSE MAPPING AGENCY HYDROGRAPHIC/TOPOGRAPHIC CENTER  
Washington, D.C. 20315-0030

**WARNING**  
The prudent mariner will not rely solely on any single  
aid to navigation, particularly on floating aids. See  
paragraph No. 1 of Notice to Mariners No. 1 or Sailing  
Directions Planning Guides for information relative to  
DMAHTC Charts.

Islands off the Venezuela Coast  
SOUNDINGS IN FATHOMS

Users should refer corrections, additions, and  
comments for improving this product to:  
DIRECTOR, DEFENSE MAPPING AGENCY,  
ATTN: PR, 8613 LEE HIGHWAY, FAIRFAX,  
VA 22031-2137.

24423